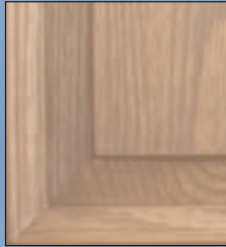


Stain Finishes

All with Solid Colored Frames, our White Vinyl Clad Frames or Stained Composite Frame.



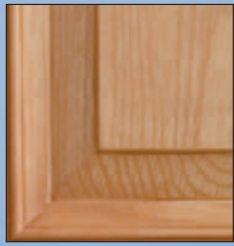
Cherry



Danish Walnut



Dark Mahogany



Fruitwood



Teak



TF 60 Door with 2654 Sidelites
 Dark Mahogany

Door Paint Colors

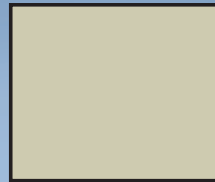
All with Matching Frames or with our White Vinyl Clad Frames.



NC 538 Door with 2538 Sidelites



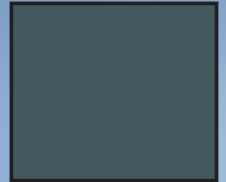
White*



Almond

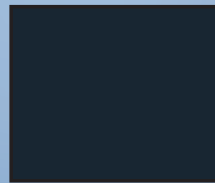


Platinum



Charcoal

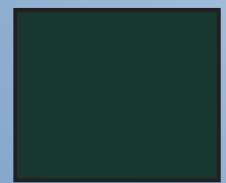
*White Pre-Finished
 Steel for the
 Most Durable Door



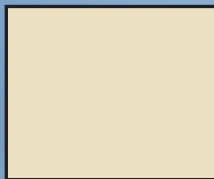
Imperial Blue



Wine Red



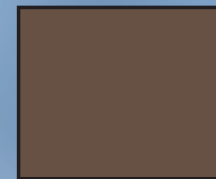
Hunter Green



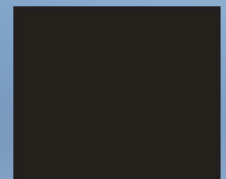
Almond Cream



Sahara Sand



Cocoa Brown



Dark Brown

4⁹/₁₆" door frames are wrapped in our multi-layered acrylic laminate in 9 colors.

The 4⁹/₁₆" Almond and all 5¹/₄" & 6⁹/₁₆" door frames are wrapped in our vinyl laminate and painted to match.

All frames are available clad in white vinyl that protects the wood and provides an excellent base for painting, if desired.

Composite frames are available in 4⁹/₁₆", 5¹/₄" & 6⁹/₁₆" and stained to match.

Colors reproduced here may vary somewhat from actual product colors.